

gMCP Quick Start Guide



This package provides functions and graphical user interfaces for graph based multiple test procedures. You can use this package completely from the R command line and also completely from the graphical user interface (GUI) without the need to know any R at all. This quick start guide only describes the steps to start the GUI.

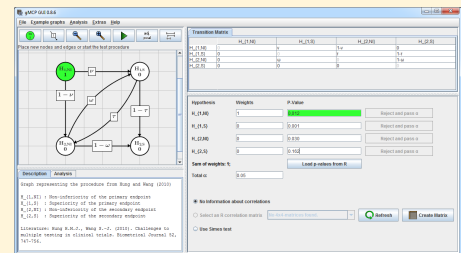
Install and Start

If you don't already have R on your system, you can download a bundled version of R and gMCP from <http://www.algorithm-forge.com/gMCP/bundle/>.

Otherwise open R and type `install.packages("gMCP")` into the R Console, select an arbitrary mirror and gMCP will be downloaded and installed.

From now on you can start the gMCP graphical user interface by entering the following commands into the R Console:

```
library(gMCP)
graphGUI()
```



Creation of the graph

Use the first two buttons of the icon panel to create a graph or select one of the common test procedures from our example menu, that include the fixed sequence test, fallback procedure, improved fallback procedure, parallel gatekeeping, improved parallel gatekeeping, truncated Holm procedure and many more.

Test procedure, CI and adjusted p-values

After you have created or loaded your graph you can start the test procedure and calculate confidence intervals or adjusted p-values by using the last three buttons of the icon panel.

For all further questions take a look at the help menu, the manual or mail us at:

help@small-projects.de